

Synonyms and Antonyms

G Grammar

P Punctuation

S Spelling

Challenge 1

S **1** Draw a line to link each word with its synonym.

super

hard

difficult

amble

happy

fantastic

kind

large

walk

joyful

big

caring



6 marks

Marks..... /6

Challenge 2

S **1** Write the antonym to each word shown. Use each word in the box only once.

cold

under

noisy

correct

after

far

a) quiet

b) over

c) near

d) before

e) wrong

f) hot

6 marks

2 Read each sentence and write the antonym of each word underlined.

a) They washed in clean water.

b) They could hear a loud noise in the house.

c) The test was very difficult.

3 marks

Marks..... /9

Synonyms and Antonyms

Challenge 3

- SG** **1** Replace the words underlined in these sentences with a synonym from the words below so that each sentence makes sense.



alike

man

close

wrong

over

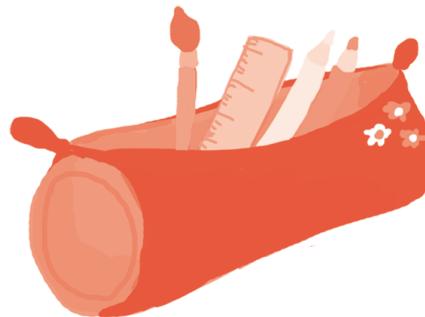
- a) The school day was finished. _____
- b) The young chap looked smart in his suit. _____
- c) Most of the answers were incorrect. _____
- d) They all looked similar in their school uniform. _____
- e) The shop was very near to their house. _____

5 marks

- 2** Complete the table to show the synonym and antonym for each word. The first line has been done for you.

Word	Synonym	Antonym
pretty	<i>beautiful</i>	<i>ugly</i>
rich		
young		
expensive		
stop		

10 marks



Marks..... /15

Total marks /30

How am I doing?

