

# Multiply 3-digits by 1-digit

- 1 Filip uses a place value chart to help him multiply a 3-digit number by a 1-digit number.

Hundreds	Tens	Ones
100	10 10	1 1 1 1
100	10 10	1 1 1 1
100	10 10	1 1 1 1

- a) What multiplication is Filip working out?

$$124 \times 3$$

- b) What is the answer to Filip's multiplication?

$$372$$

- 2 Use place value counters to complete the multiplications.

a)  $3 \times 213 =$   $639$

d)  $6 \times 106 =$   $636$

b)  $4 \times 216 =$   $864$

e)  $4 \times 209 =$   $836$

c)  $5 \times 106 =$   $530$

f)  $317 \times 3 =$   $951$

- 3 Complete the multiplication.

Use the place value chart to help you.

H	T	O
100 100	10	1 1 1 1 1
100 100	10	1 1 1 1 1
100 100	10	1 1 1 1 1

		H	T	O	
		2	1	5	
	x			3	
		6	4	5	
			1		

- 4 Complete the multiplications.

a)

		H	T	O	
		2	1	7	
	x			4	
		8	6	8	
			2		

c)

		H	T	O	
		1	0	8	
	x			6	
		6	4	8	
			4		

b)

		H	T	O	
		4	3	9	
	x			2	
		8	7	8	
			1		

d)  $163 \times 5$

		H	T	O	
		1	6	3	
	x			5	
		8	1	5	
		3	1		

e)  $3 \times 240$

		H	T	O	
		2	4	0	
	x			3	
		7	2	0	
		1			

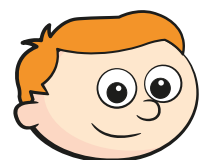
f)  $7 \times 131$

		H	T	O	
		1	3	1	
	x			7	
		9	1	7	
		2			

- 5 A lorry driver travels 156 km per day.  
How many kilometres will the lorry driver have travelled after 3 days?

468km

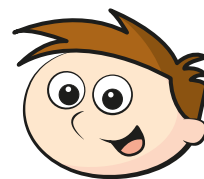
- 6 Ron and Teddy are working out  $5 \times 245$



Ron

I know the answer will be greater than 1,000 because I know  $5 \times 200$  is 1,000

I know the answer should end in 5 because I know  $5 \times 5$  is 25



Teddy

- a) Who is correct? Circle your answer.

Ron

Teddy

both

neither

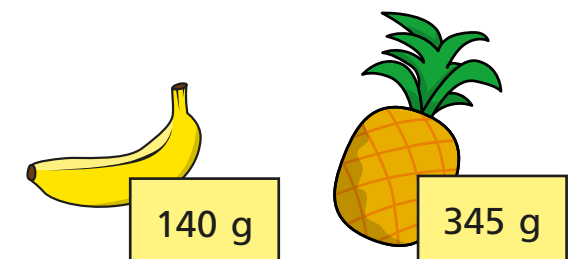
- b) Use a written method to work out  $5 \times 245$

1,225

- 7 There are 7 year groups in a school.  
There are 112 children in each year group.  
How many children are there in the whole school?

784

- 8 A banana weighs 140 g  
A pineapple weighs 345 g



- Bag A contains 8 bananas and bag B contains 3 pineapples.  
Which bag weighs more and by how much?  
Show your working.

Bag A weighs 85 g more than bag B.